

**MODEL
RG57**



ESSENTIALS FOR LIFE

User Manual

**Air-conditioner
Remote Control**

SÔLT

**This page
is intentionally
left blank**

Contents	4	Technical Specifications
	5	Your Remote
	6	Function Buttons
	7	Handling Your Remote
	8	LED Screen Indicators
	9	Operating Your Remote
	12	Setting The Timer Function
	16	Advanced Functions

Customer Care

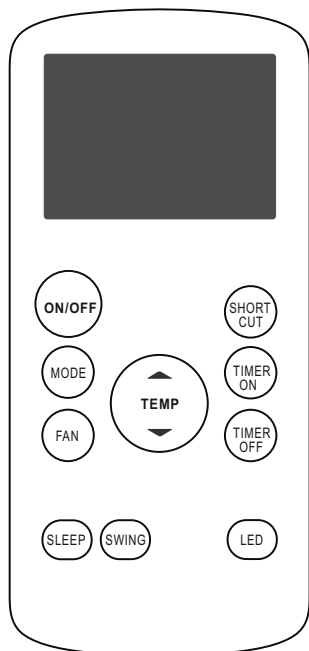
Sôlt recommends the use of original spare parts. When contacting our customer service team, please ensure that you have the following information at hand (which can be found on your appliances' rating plate).

- Model Number
- Serial Number

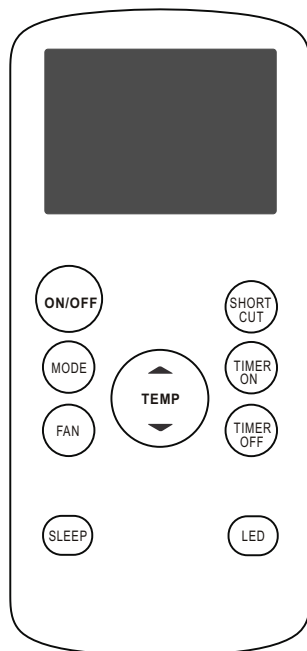
Technical Specifications

Models	RG57H(B)/BG(C)E; RG57H1(B)/BG(C)E; RG57H2(B)/BG(C)EF; RG57H3(B)/BG(C)EFU1; RG57H3(B)/BG(C)EF; RG57H1(B)/BG(C)E-M; RG57H(B)/BG(C)EU1; RG57H4(B)/BG(C)EFU1; RG57H(B)/BG(C)E-M; RG57H(B)/BG(C)EU1-M; RG57H3(B)/BG(C)EFU1-M; RG57H1(B)/BG(C)EU1-M; RG57H5(B)/BG(C)CEU1; RG57H5(B)/BG(C)CE; RG57H1(B)/BG(C)EU1; RG57H2(B)/BG(C)EFU1; RG57H3(B)/BG(C)EF; RG57H4(B)/BG(C)EF; RG57H2(B)/BG(C)EF-M; RG57H2(B)/BG(C)EFU1-M
Rated Voltage	3.0V (Dry batteries R03/LR03×2)
Signal Receiving Range	8m
Plug type	SAA
Environment	-5°C~60°C (23°F~140°F)

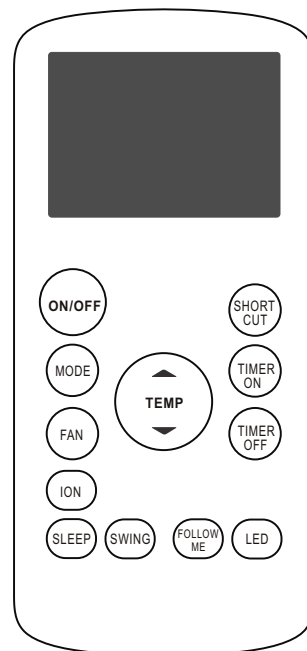
Your Remote



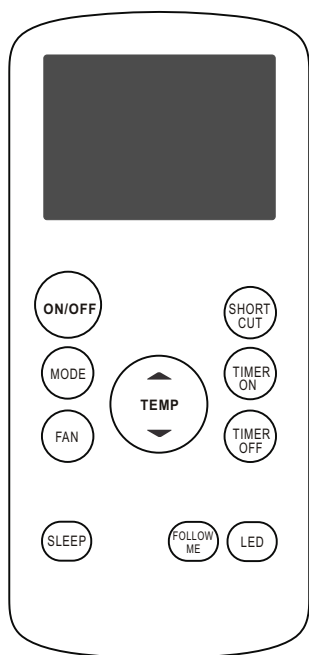
RG57H(B)/BG(C)E
 RG57H(B)/BG(C)EU1
 RG57H(B)/BG(C)EU1-M
 RG57H(B)/BG(C)E-M



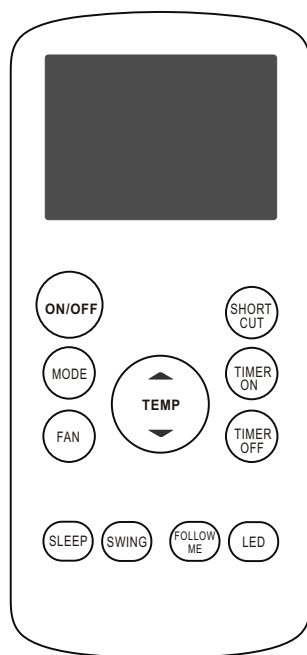
RG57H1(B)/BG(C)E;
 RG57H1(B)/BG(C)E-M
 RG57H1(B)/BG(C)EU1-M
 RG57H1(B)/BG(C)EU1



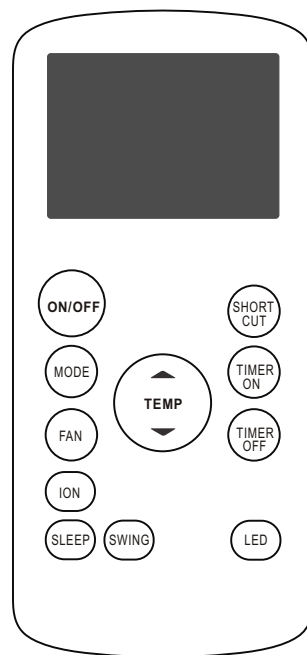
RG57H2(B)/BG(C)EF
 RG57H2(B)/BG(C)EF-M
 RG57H2(B)/BG(C)EFU1
 RG57H2(B)/BG(C)EFU1-M



RG57H3(B)/BG(C)EF
 RG57H3(B)/BG(C)EFU1
 RG57H3(B)/BG(C)EFU1-M
 RG57H3(B)/BG(C)EF-M



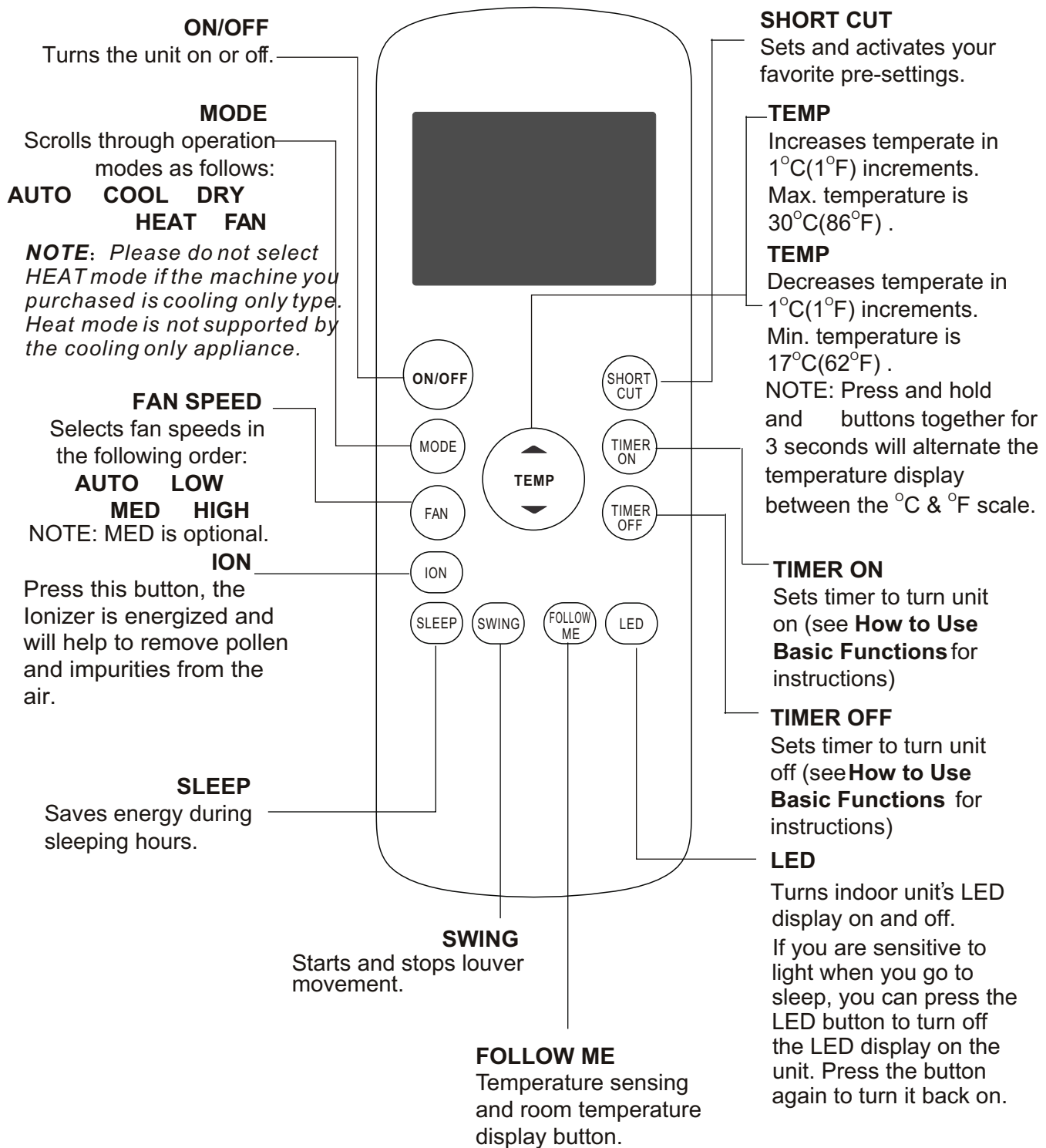
RG57H3(B)/BG(C)EF
 RG57H3(B)/BG(C)EFU1
 RG57H3(B)/BG(C)EFU1-M
 RG57H3(B)/BG(C)EF-M



RG57H5(B)/BG(C)E
 RG57H5(B)/BG(C)EU1

Function Buttons

Before you begin using your new air conditioner, make sure to familiarise yourself with its remote control. The following is a brief introduction to the remote control itself. For instructions on how to operate your air conditioner, refer to your Air Conditioner's User Manual.



NOTE:
Swing, Ion, Follow me and Med fan speed features are optional.

Handling Your Remote

IMPORTANT!

If you are unsure on what a function does, please refer to the Advanced Functions section within this manual for a detailed description of how to use your air conditioner.

SPECIAL NOTE:

- Button designs on your unit may differ slightly from the example shown.
- If the unit does not have a particular function, pressing that function's button on the remote control will have no effect.
- When there are wide differences between the remote control illustration and the User Manual's description, please refer to the User Manual's function description.

TIPS FOR USING REMOTE CONTROL

- The remote control must be used within 8 meters of the unit.
- The unit will beep when remote signal is received.
- Curtains, other materials and direct sunlight can interfere with the infrared signal receiver.
- Remove batteries if the remote will not be used more than 2 months.

INSERTING AND REPLACING BATTERIES

Your air conditioning unit comes with two AAA batteries. Put the batteries in the remote control before use.

1. Slide the back cover from the remote control downward, exposing the battery compartment.
2. Insert the batteries, paying attention to match up the (+) and (-) ends of the batteries with the symbols inside the battery compartment.
3. Slide the battery cover back into place.

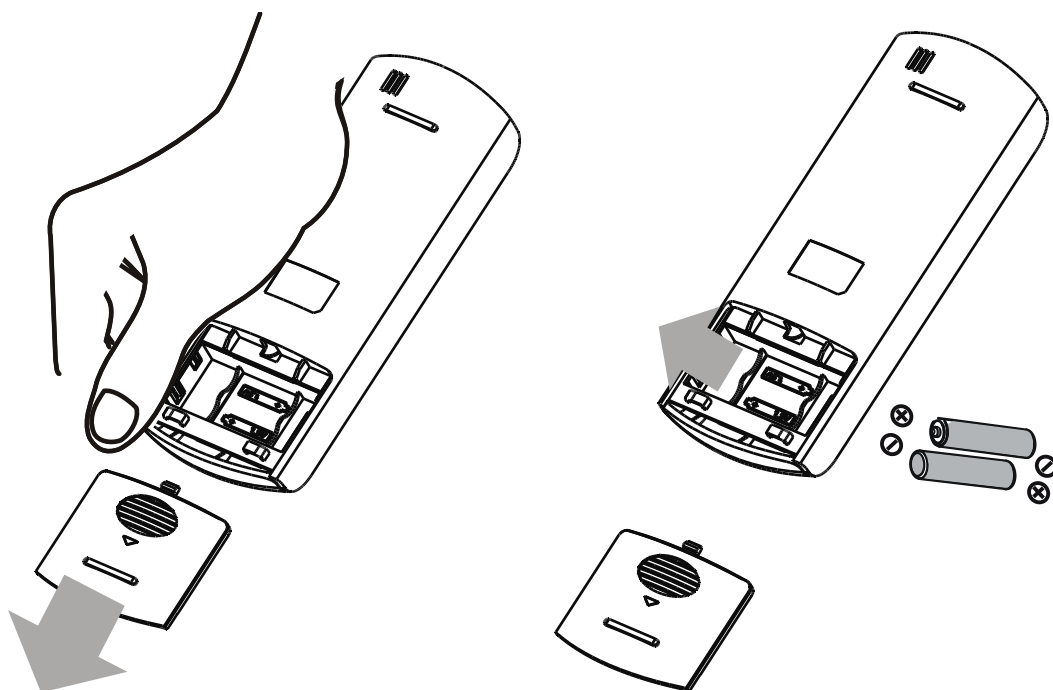
IMPORTANT BATTERY NOTES:

For optimum product performance:

- Do not mix old and new batteries, or batteries of different types.
- Do not leave batteries in the remote control if you don't plan on using the device for more than 2 months.

BATTERY DISPOSAL

Do not dispose of batteries as unsorted municipal waste. Refer to local laws for proper disposal of batteries.



Operating Your Remote

SETTING THE TEMPERATURE

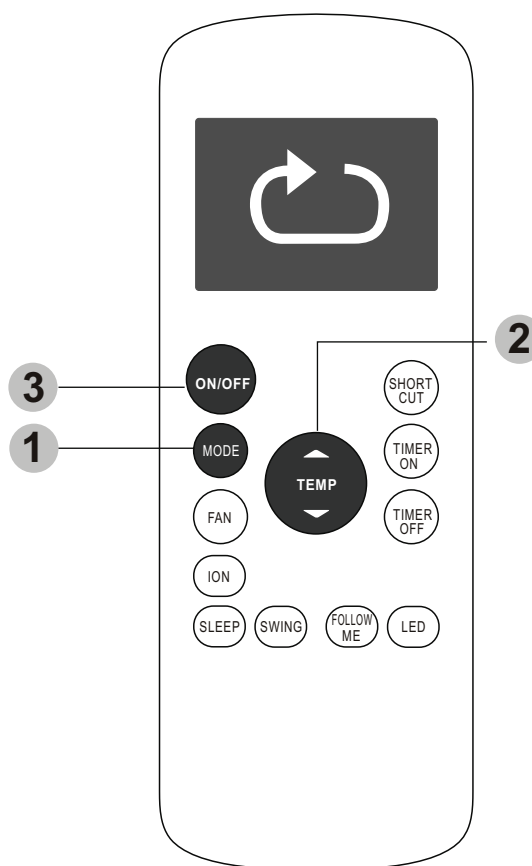
The operating temperature range for your appliance is 17-30°C (62°F-86°F). You can increase or decrease the set temperature in 1°C (1°F) increments.

AUTO OPERATION

In **AUTO** mode, the unit will automatically select the COOL, FAN, HEAT or DRY mode based on the set temperature.

1. Press the **MODE** button to select **Auto** mode.
2. Set your desired temperature using the **Temp▲** or **Temp▼** button.
3. Press the **ON/OFF** button to start the unit.

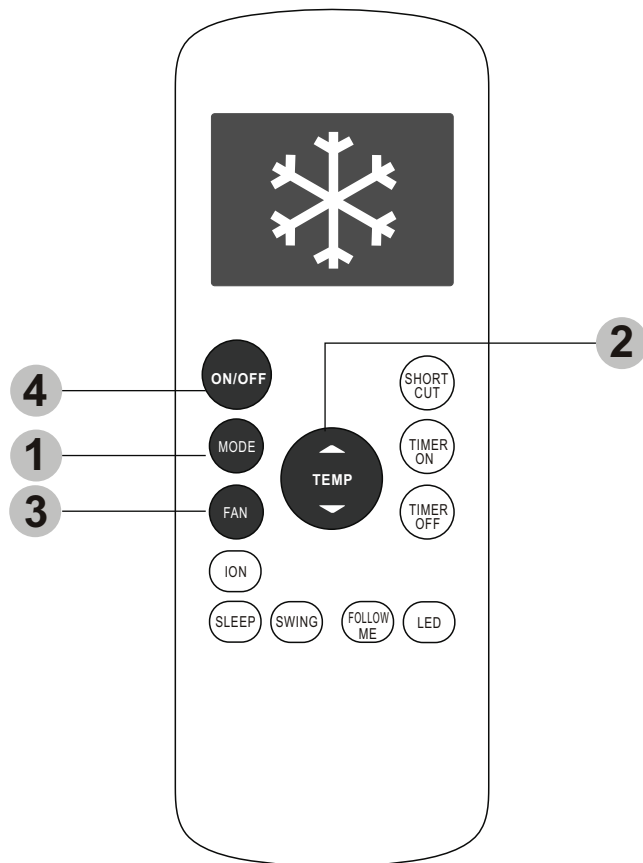
NOTE: FAN SPEED cannot be set in Auto mode.



Operating Your Remote (Continued)

COOL OPERATION

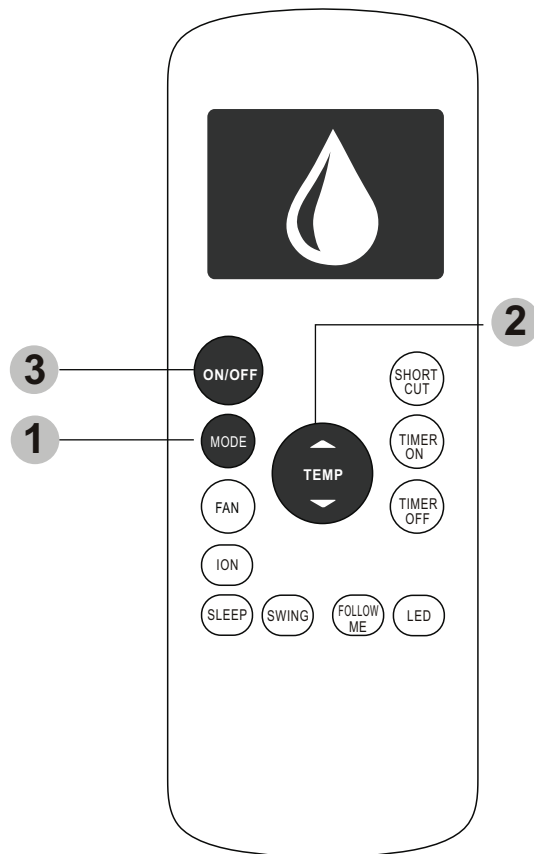
1. Press the **MODE** button to select **COOL** mode.
2. Set your desired temperature using the **Temp▲** or **Temp▼** button.
3. Press the **FAN** button to select the fan speed: **AUTO**, **LOW**, **MED** or **HIGH**.
4. Press the **ON/OFF** button to start the unit.



DRY OPERATION (DEHUMIDIFYING)

1. Press the **MODE** button to select **Dry** mode.
2. Set your desired temperature using the **Temp▲** or **Temp▼** button.
3. Press the **ON/OFF** button to start the unit.

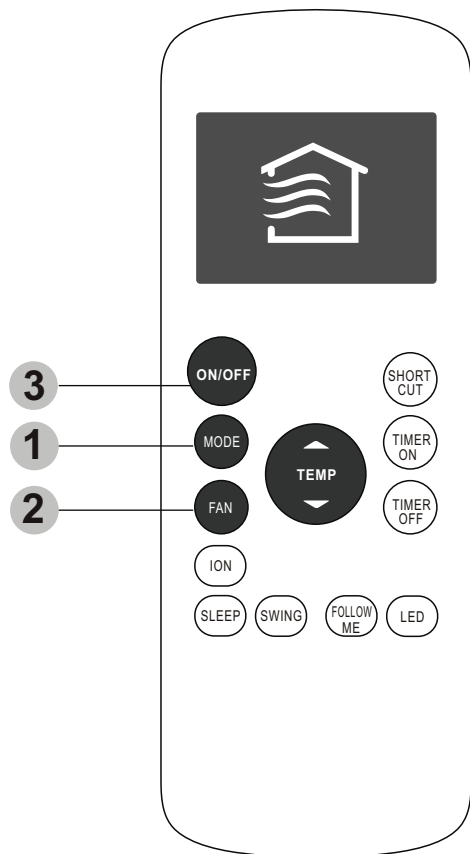
NOTE: FAN SPEED cannot be set in Dry mode.



FAN OPERATION

1. Press the **MODE** button to select **FAN** mode.
2. Press the **FAN** button to select the fan speed: AUTO, LOW, MED or HIGH.
3. Press the **ON/OFF** button to start the unit.

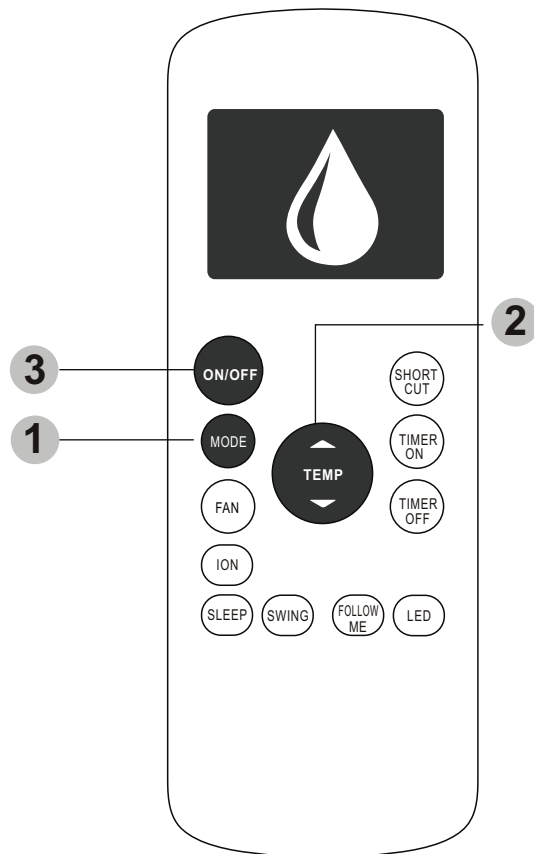
NOTE: You cannot set temperature in FAN mode. As a result, your remote control's LCD screen will not display a temperature



HEAT OPERATION

1. Press the **MODE** button to select **Heat** mode.
2. Set your desired temperature using the **Temp▲** or **Temp▼** button.
3. Press the **FAN** button to select the fan speed: AUTO, LOW, MED or HIGH.
4. Press the **ON/OFF** button to start the unit.

NOTE: As outdoor temperature drops, the performance of your unit's HEAT function may be affected. In such instances, we recommend using this air conditioner in conjunction with other heating appliance.



Setting The Timer Function

Your air conditioning unit has two timer-related functions:

TIMER ON: Sets the amount of timer after which the unit will automatically turn on.

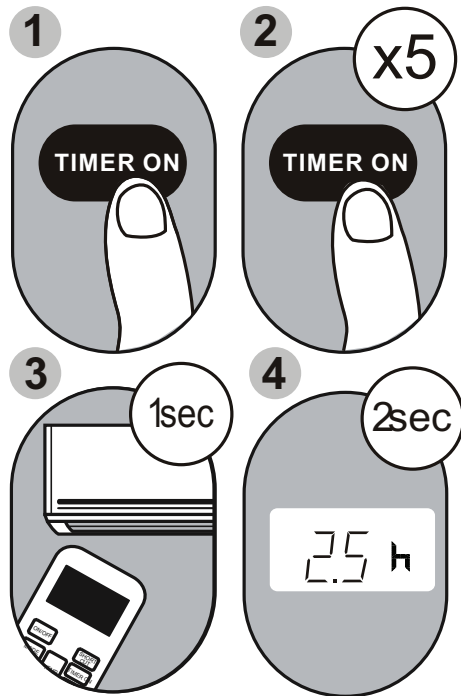
TIMER OFF: Sets the amount of time after which the unit will automatically turn off.

TIMER ON FUNCTION

The **TIMER ON** function allows you to set a period of time after which the unit will automatically turn on, such as when you return home from work.

1. Press the **TIMER ON** button. By default, the last time period that you set and an “h” (indicating hours) will appear on the display.
Note: This number indicates the amount of time after the current time that you want the unit to turn on. For example, if you set **TIMER ON** for 2 hours, “2.0h” will appear on the screen, and the unit will turn on after 2 hours.
2. Press the **TIMER ON** button repeatedly to set the time when you want the unit to turn on.
3. Wait 2 seconds, then the **TIMER ON** function will be activated. The digital display on your remote control will then return to the temperature display.

Example: Setting unit to turn on after 2.5 hours:

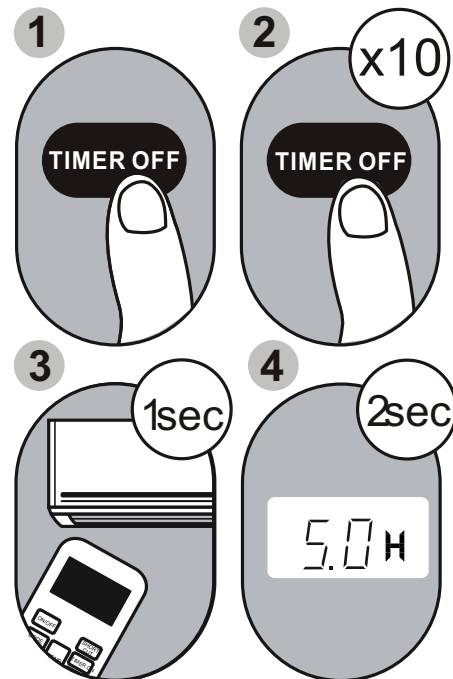


TIMER OFF FUNCTION

The **TIMER OFF** function allows you to set a period of time after which the unit will automatically turn off, such as when you wake up.

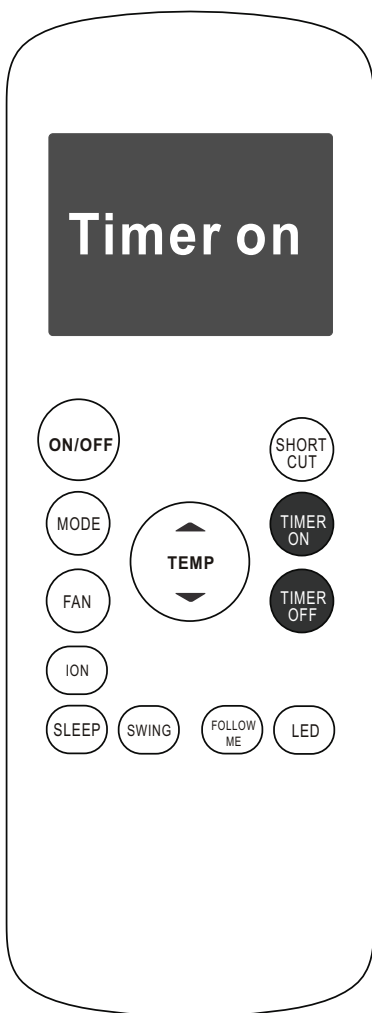
1. Press the **TIMER OFF** button. By default, the last time period that you set and an “h” (indicating hours) will appear on the display.
Note: This number indicates the amount of time after the current time that you want the unit to turn off. For example, if you set **TIMER OFF** for 2 hours, “2.0h” will appear on the screen, and the unit will turn off after 2 hours.
2. Press the **TIMER OFF** button repeatedly to set the time when you want the unit to turn off.
3. Wait 2 seconds, then the **TIMER OFF** function will be activated. The digital display on your remote control will then return to the temperature display.

Example: Setting unit to turn off after 5 hours:



NOTE:

When setting the **TIMER ON** or **TIMER OFF** functions, up to 10 hours, the time will increase in 30 minute increments with each press. After 10 hours and up to 24, it will increase in 1 hour increments. The timer will revert to zero after 24 hours. You can turn off either function by setting its timer to "0.0h".



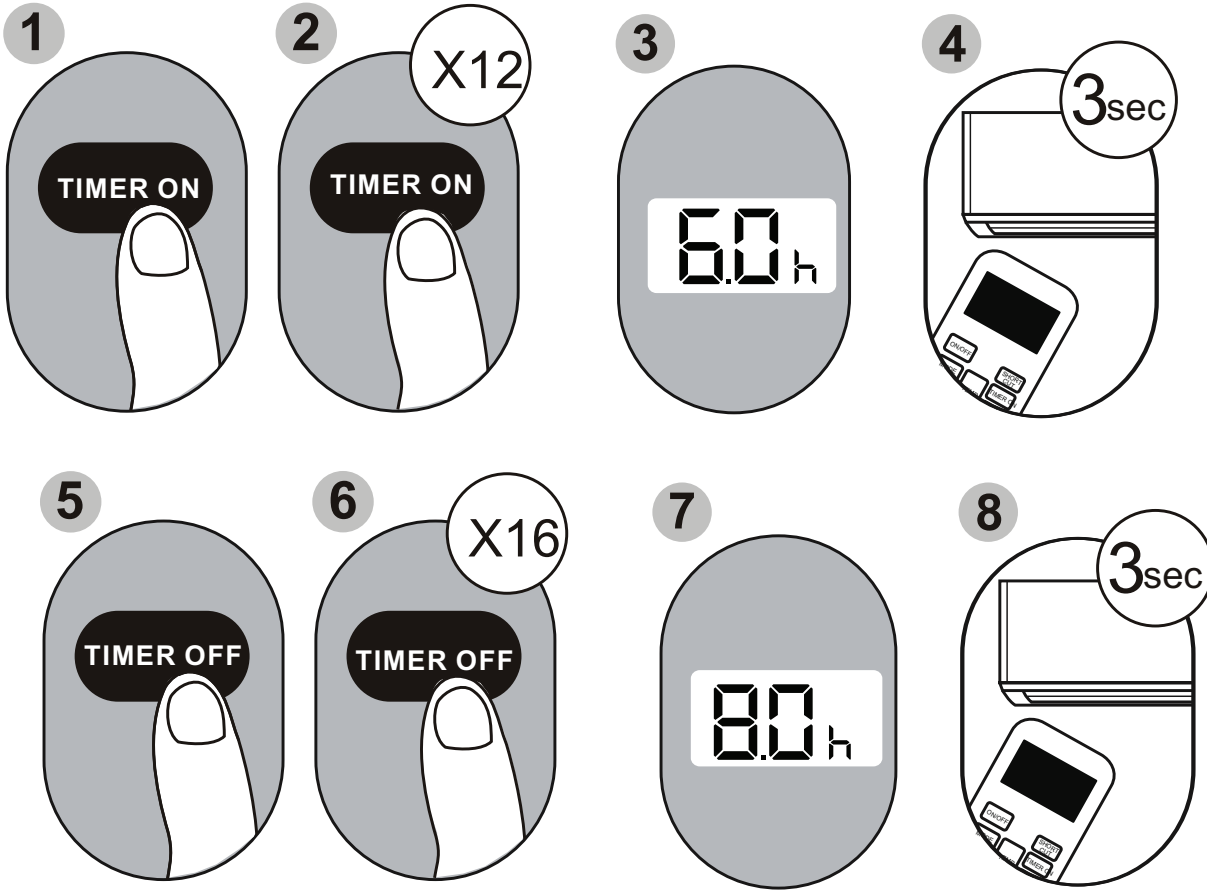
Continue to press **TIMER ON** or **TIMER OFF** until desired time is reached.

Setting The Timer Function (Continued)

SETTING BOTH TIMER ON & TIMER OFF AT THE SAME TIME

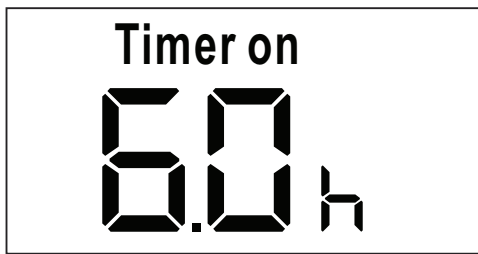
Keep in mind that the time periods you set for both functions refer to hours after the current time. For example, say that the current time is 1:00 PM, and you want the unit to turn on automatically at 7:00 PM. You want it to operate for 2 hours, then automatically turn off at 9:00 PM.

Do the following:



Example: Setting the unit to turn on after 6 hours, operate for 2 hours, then turn off
(see the figure below)

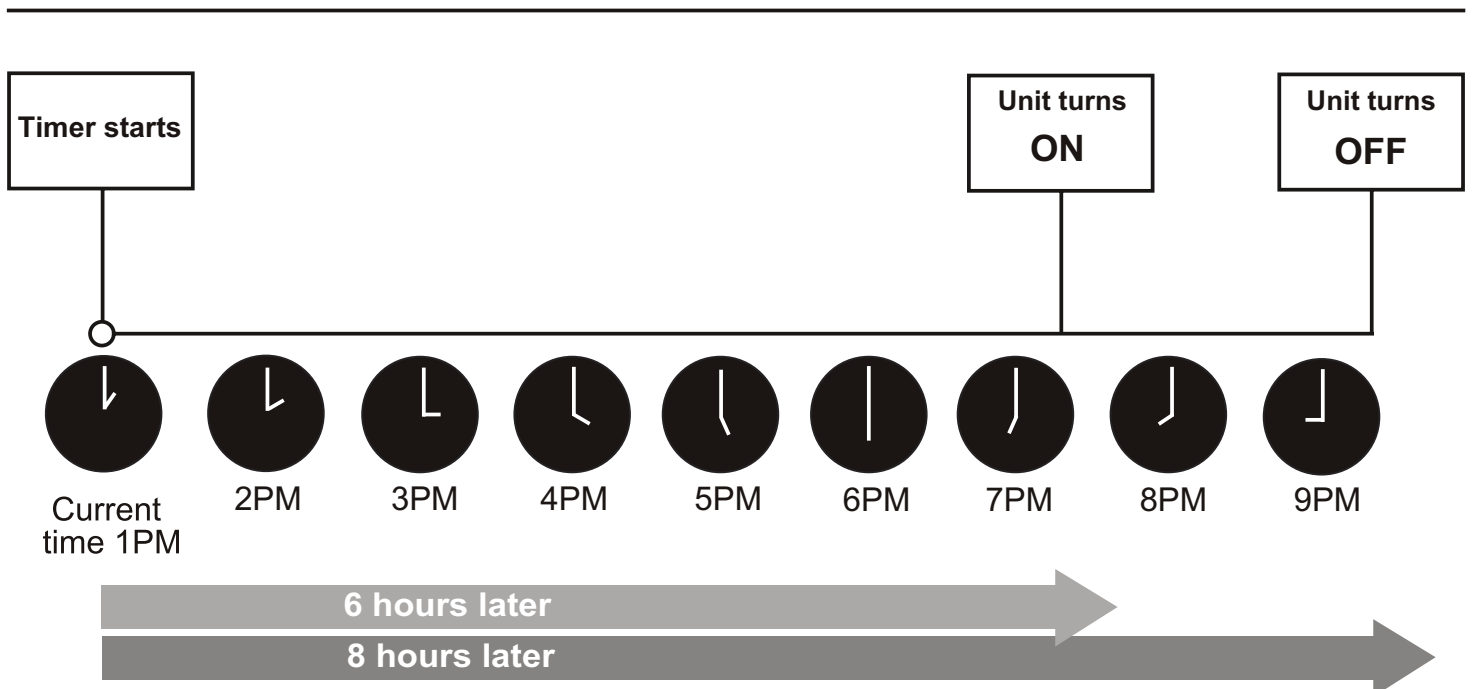
Your remote display



Timer is set To turn ON
6 hours from current time



Timer is set to turn OFF
8 hours from current time



Advanced Functions

SLEEP Function

The SLEEP function is used to decrease energy use while you sleep (and don't need the same temperature settings to stay comfortable).

Note: The SLEEP function is not available in FAN or DRY mode.

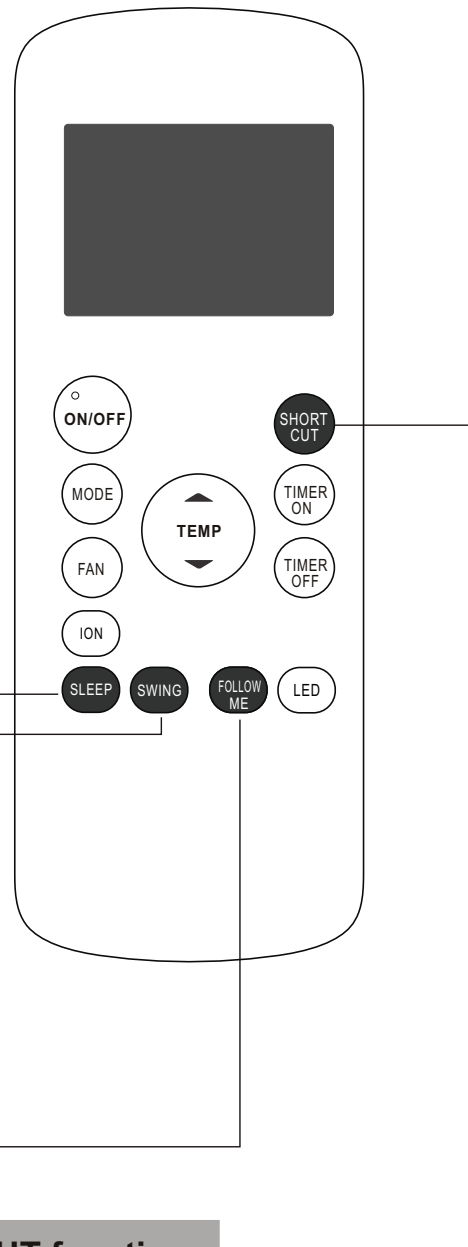
SWING Function

Used to stop or start louver movement and set the desired up/down air flow direction. The louver changes 6 degrees in angle for each press (some models without). If keep pushing more than 2 seconds, the louver auto swing feature is activated.

FOLLOW ME function

The FOLLOW ME function enables the remote control to measure the temperature at its current location. When using AUTO, COOL, or HEAT functions, measuring ambient temperature from the remote control (instead of from the indoor unit itself) will enable the air conditioner to optimize the temperature around you and ensure maximum comfort.

1. Press **FOLLOW ME** button to activate function. The remote control will send temperature signal to the unit every three minutes.
2. Press **FOLLOW ME** button again to turn off this function.



SHORTCUT function

- Used to restore the current settings or resume previous settings.
- Push this button when remote controller is on, the system will automatically revert back to the previous settings including operating mode, setting temperature, fan speed level and sleep feature (if activated).
- If pushing more than 2 seconds, the system will automatically restore the current operation settings including operating mode, setting temperature, fan speed level and sleep feature (if activated).

NOTE:

- Buttons design is based on typical model and might be slightly different from the actual one you purchased, the actual shape shall prevail.
- All the functions described are accomplished by the unit, if the unit has no this feature, there is no corresponding operation happened when press the relative button on the remote controller.
- When there are wide differences between Remote controller Illustration and USERS MANUAL on function description, the description on USERS MANUAL shall prevail.
- The device could comply with the local national regulations. In Canada, it should comply with CAN ICES-3(B)/NMB-3(B). In USA, this device complies with part 15 of the FCC Rules. Operation is subject to the following two conditions: (1) This device may not cause harmful interference, and (2) this device must accept any interference received, including interference that may cause undesired operation.
- -This equipment has been tested and found to comply with the limits for a Class B digital device, pursuant to part 15 of the FCC Rules. These limits are designed to provide reasonable protection against harmful interference in a residential installation. This equipment generates, uses and can radiate radio frequency energy and, if not installed and used in accordance with the instructions, may cause harmful interference to radio communications. However, there is no guarantee that interference will not occur in a particular installation. If this equipment does cause harmful interference to radio or television reception, which can be determined by turning the equipment off and on, the user is encouraged to try to correct the interference by one or more of the following measures:
 - Reorient or relocate the receiving antenna.
 - Increase the separation between the equipment and receiver.
 - Connect the equipment into an outlet on a circuit different from that to which the receiver is connected.
 - Consult the dealer or an experienced radio/TV technician for help.
 - Changes or modifications not approved by the party responsible for compliance could void users authority to operate the equipment.

**An initiative by
Residentia Group**



ESSENTIALS FOR LIFE

**T. 1300 11 4357
E. support@residentiagroup.com.au**

www.solt.house



E2447

SÔLT